



Yixing Aipu Air System Equipment Co., Ltd

aipukqdl.com



Oil-Free Permanent Magnet Variable Frequency Screw Air Compressor 7.5-410kW

Our Product Introduction

for more products please visit us on aipukqdl.com

Basic Information

- Place of Origin: China
- Brand Name: Aipu
- Model Number: DH7-410kW
- Minimum Order Quantity: 1PC
- Price: negotiable
- Packaging Details: container
- Delivery Time: 10
- Payment Terms: tt
- Supply Ability: 100t/y



Product Specification

- Exhaust Pressure: 7-60barg
- Air Flow: 0.3-70m³/min
- Type: Oil Free Lubrication Permanent Magnet Variable Frequency Screw Air Compressor
- Rated Power: 7.5kW-410kW
- Noise Level: ≤80dB(A)
- Weight: 430-5200kg
- Highlight: **oil-free screw air compressor, permanent magnet air compressor, variable frequency air compressor**

Product Description

Product Description:

The oil-free lubrication permanent magnet variable frequency screw air compressor is a new generation of high-efficiency, energy-saving, and environmentally friendly air compression equipment. It adopts innovative water lubrication technology and permanent magnet synchronous variable frequency drive to achieve 100% oil-free compression, perfectly meeting the strict air quality requirements of industries such as medical, food, and electronics. This product combines the advantages of high efficiency, energy saving, long service life, and intelligent control, and is an ideal alternative to traditional oil air compressors.

Why choose oil-free compressor:

Air quality plays a decisive role in many cases. If solid particles, water vapor, oil, and oil vapor appear in the compressed air system, it will lead to downtime, product damage, and even product recalls, damaging brand reputation. Worse still, it may also damage the credibility of consumers and products.

Improve reliability

Reliable product and system design can provide high-quality air, protect sensitive downstream gas equipment, reduce maintenance work, and extend equipment lifespan.

Improve productivity

The use of certified oil-free zero grade compressors ensures zero air pollution and eliminates the risk of product damage and waste.

Improve maintainability

Our oil-free equipment is specially designed for easy maintenance and repair, providing convenient access to consumable components.

Reduce lifecycle costs

The initial cost of an oil-free system is relatively high, but its operational and maintenance costs throughout its entire lifecycle are low, which can offset the two while maintaining higher air quality.

Oil free scroll compressor is suitable for your application:

Gardner Denver offers reliable oil-free products with a wide variety, always suitable for your industry and application. We will evaluate and recommend more suitable solutions to improve the productivity of the device, thereby providing a zero pollution risk final product.



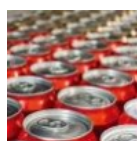
Hospitals, laboratories, universities



Pharmaceutical and Biotechnology



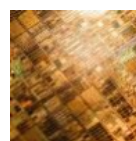
Medical equipment, plastics



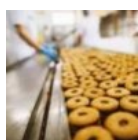
Canned food, beverages, brewing



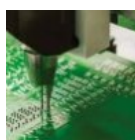
Glass manufacturing



Electronics and semiconductors



Food processing



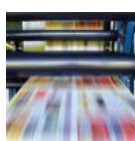
Electronics assembly



Textile industry



Bottling and distillation



Printing



Turf management

Advantages of oil-free lubrication air compressor:



No oil



Reliable

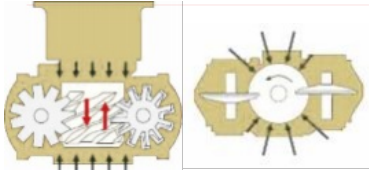


Energy conservation



Mute

Advantages of oil-free lubrication permanent magnet variable frequency screw air compressor:



Pure and oil-free

Using water lubrication cooling technology, no oil coolant is used in the compression chamber to produce truly oil-free compressed air.



Safe and reliable

A screw forms 12 compression chambers with two star wheels on the left and right, and rotates once to produce 12 air compression processes.

The two star wheels of a single screw air compressor are symmetrically distributed on both sides of the screw, ensuring balance force.

The axial and radial forces acting on the screw can cancel each other out, effectively suppressing the vibration source.

The rotor is balanced in terms of force, with small pulses and vibrations, resulting in more reliable performance and longer lifespan.

Efficient and energy-saving

When a single screw compressor works, each screw groove on the screw is used twice in one rotation, making full use of the screw groove space. Therefore, compared with other rotary compressors, its structural size is smaller.

The depth of the screw groove of a single screw becomes shallower with the increase of compression chamber pressure, and the depth is zero at the end of exhaust, so theoretically there is no clearance accumulation.

Using water as a coolant, the temperature during the compression process of the main engine is lower, the efficiency is higher, and the energy-saving effect is significant.

Silent and environmentally friendly

The motor and screw are directly connected to drive without a gearbox, eliminating high noise components.

The silent box type outer casing design effectively seals the noise inside the unit, keeping the overall operating noise at a low level.

Our oil-free lubrication permanent magnet variable frequency screw air compressor has the following advantages:

DH oil-free lubrication permanent magnet variable frequency screw air compressor adopts water lubrication cooling technology, and no oil coolant is used in the compression chamber, providing users with pure compressed air to meet various production needs.



Efficient host

Directly spray pure water into the compression chamber for cooling, without using oil coolant, truly oil-free compressed air.

The head rotor is made of stainless steel material, which will never rust.

The bearings adopt high-end stainless steel bearings to ensure the reliability, high efficiency, and low noise of water lubrication.

The host has no metal or metal meshing parts, the rotor is balanced in force, stable and reliable, and has a longer lifespan.

Rare earth permanent magnet variable frequency motor

The Ge Nan Deng Fu DH series water lubricated oil-free screw compressor is equipped with a rare earth permanent magnet variable frequency motor drive. Compared with AC asynchronous motors, rare earth permanent magnet motors have a simple structure, reliable operation, high power density, and wide speed range, making them an ideal power choice for high-efficiency and energy-saving air compressors.

Electric rotor

Permanent magnet rotor, with lower losses and increased efficiency by 5-10%

Small size and light weight

Compared to asynchronous motors of the same power, it is 1 to 2 machine base sizes smaller

Low noise

Reasonable slot pole coordination, magnetic field design, wider operating frequency, and lower operating noise

High starting torque

The starting torque and overload capacity of permanent magnet synchronous motors are one power level higher than asynchronous motors

Start without impact

Smooth soft start, starting current not exceeding twice the rated current

Wide speed range

The rotor does not require electrical excitation and can achieve low-speed high torque

Advantages of frequency conversion

Ordinary air compressors usually adjust the air intake to regulate the air volume, which keeps the compressor running at rated speed.

Even if the air volume decreases, the actual energy consumption will not decrease proportionally

The displacement of the variable frequency air compressor can be perfectly combined with the user's gas consumption

When purchasing an air compressor, the traditional cost (i.e. purchase cost and operation and maintenance cost) accounts for only 20% of the total cost, while energy consumption accounts for 80%. Compared with ordinary industrial frequency air compressors, DH series variable frequency air compressors save more than 30% energy

Since your investment and start-up, the DH series variable frequency air compressor has been saving you costs

Start smoothly

No peak starting current

Completely eliminating energy consumption during unloading and reducing the burden on electrical components

The low starting current of frequency conversion has no impact on the power grid, which is particularly important for users in factories located in unstable areas of the power grid

Stable output pressure

Variable frequency control maintains the pressure band within 0.1 bar, without the need for a large storage tank. The pressure will not exceed the required value, and there is no energy waste

No startup impact

The low starting torque of the motor has minimal impact on mechanical components, resulting in longer service life of mechanical components such as bearings

Transmit torque according to actual needs without wasting excess energy

Excellent frequency converter

Built in frequency converter, unique air duct design, stable and reliable

Adopting cutting-edge vector control technology, it has excellent low-frequency speed characteristics and dynamic response characteristics, and complete protection functions, which can achieve comprehensive protection from the frequency converter to the motor

Safe lightning protection design with built-in lightning overcurrent protection device effectively enhances the self-protection capability of the frequency converter against induced lightning

intelligent control

Powerful frequency conversion control protection function, automatic adjustment of load rate, comprehensive protection for motor and other components

Adopting personalized design, users can customize settings for alarm, start, stop, frequency hopping and other functions according to their needs. The self diagnostic LCD touch screen controller has a MODBUS RS485 communication interface and can be remotely controlled

The entire series comes standard with stainless steel piping

The entire range of Grundendfos water lubrication products comes standard with stainless steel piping. Compared to ordinary carbon steel piping, stainless steel piping has significant advantages:

Stainless steel is corrosion-resistant, does not accumulate scale, and does not rust, dispelling customers' doubts about carbon steel pipe rusting from the source

Stainless steel pipes have smooth inner walls and low friction coefficients, significantly reducing pipeline pressure loss

Stainless steel pipes are resistant to high temperature and high pressure, and will not leak or age after long-term use, effectively extending product life

Fully automatic control of waterway circulation system

The internal water circulation system of the air compressor consists of four major components: a water softener, a water filter, a water cooler, and a water air separator. The entire system operates under fully automatic control, strictly controlling the circulating water to always be in a highly clean state to meet the needs of the unit

The various components of the waterway circulation system adopt a silent design to remove high-frequency noise, greatly reducing the operating noise of the water lubrication unit. The water filter and water vapor separator are made of stainless steel material, which provides more stable quality and better performance

Product functions and specifications

Laser cutting matched with air compressor

| Model | Displacement m3/min | Pressure barg | Power kW | Port size inch | External dimensions (L x W x H)mm | | Weight kg | Cooling water volume 30℃ (t/h) |
|--------------|------------------------|------------------|-------------|-------------------|--------------------------------------|--------------------|--------------|--------------------------------------|
| | | | | | Forced air cooling | Water-cooling | | |
| DH2VSD-16A | 0.7-2.0 | 16 | 22 | 1" | 1590 x 870 x 1500 | - | 640 | |
| DH3VSD-16A | 1.2-3.1 | 16 | 37 | 1.5" | 1690 x 1000 x 1600 | - | 1010 | |
| DH4VSD-16A/W | 1.5-4.1 | 16 | 45 | 1.5" | 2000 x 1300 x 1650 | 1590 x 950 x 1500 | 1110/980 | 9 |
| DH7VSD-16A/W | 2.5-6.7 | 16 | 75 | 2" | 2700 x 1650 x 2020 | 2300 x 1250 x 1600 | 2000/1550 | 15 |

7-315kW product performance parameters

| Model | Displacement m3/min | Pressure barg | Power kW | Port size inch | External dimensions (L x W x H)mm | | Weight kg | Noise dB(A) |
|----------------|------------------------|------------------|-------------|-------------------|--------------------------------------|--------------------|--------------|----------------|
| | | | | | Forced air | Water-cooling | | |
| DH0VSD-10A | 0.3-0.9 | 10 | 7.5 | 3/4" | 1100 x 750 x 1320 | - | 430 | 57 |
| DH11VSD-7A | 0.7-1.7 | 7 | 11 | 3/4" | 1100 x 750 x 1320 | - | 430 | 57 |
| DH11VSD-8A | 0.6-1.5 | 8 | 11 | 3/4" | 1100 x 750 x 1320 | - | 430 | 57 |
| DH11VSD-10A | 0.5-1.3 | 10 | 11 | 3/4" | 1100 x 750 x 1320 | - | 430 | 57 |
| DH15VSD-7A | 1.0-2.5 | 7 | 15 | 1" | 1370 x 820 x 1450 | - | 570 | 57 |
| DH15VSD-8A | 0.9-2.2 | 8 | 15 | 1" | 1370 x 820 x 1450 | - | 570 | 57 |
| DH15VSD-10A | 0.8-2.0 | 10 | 15 | 1" | 1370 x 820 x 1450 | - | 570 | 57 |
| DH18VSD-7A | 1.3-3.2 | 7 | 18.5 | 1" | 1370 x 820 x 1450 | - | 620 | 58 |
| DH18VSD-8A | 1.1-2.8 | 8 | 18.5 | 1" | 1370 x 820 x 1450 | - | 620 | 58 |
| DH18VSD-10A | 1.0-2.5 | 10 | 18.5 | 1" | 1370 x 820 x 1450 | - | 620 | 58 |
| DH22VSD-7A | 1.5-3.7 | 7 | 22 | 1" | 1590 x 870 x 1500 | - | 640 | 60 |
| DH22VSD-8A | 1.4-3.4 | 8 | 22 | 1" | 1590 x 870 x 1500 | - | 640 | 60 |
| DH22VSD-10A | 1.2-3.0 | 10 | 22 | 1" | 1590 x 870 x 1500 | - | 640 | 60 |
| DH30VSD-7A | 2.1-5.3 | 7 | 30 | 1 1/2" | 1690 x 1000 x 1600 | - | 980 | 61 |
| DH30VSD-8A | 1.9-4.7 | 8 | 30 | 1 1/2" | 1690 x 1000 x 1600 | - | 980 | 61 |
| DH30VSD-10A | 1.7-4.3 | 10 | 30 | 1 1/2" | 1690 x 1000 x 1600 | - | 980 | 61 |
| DH37VSD-7A | 2.5-6.2 | 7 | 37 | 1 1/2" | 1690 x 1000 x 1600 | - | 1010 | 61 |
| DH37VSD-8A | 2.2-5.6 | 8 | 37 | 1 1/2" | 1690 x 1000 x 1600 | - | 1010 | 61 |
| DH37VSD-10A | 2.0-5.0 | 10 | 37 | 1 1/2" | 1690 x 1000 x 1600 | - | 1010 | 61 |
| DH45VSD-7A/W | 3.0-7.6 | 7 | 45 | 1 1/2" | 2000 x 1300 x 1650 | 1590 x 950 x 1500 | A1100/W1010 | 65 |
| DH45VSD-8A/W | 2.7-6.3 | 8 | 45 | 1 1/2" | 2000 x 1300 x 1650 | 1590 x 950 x 1500 | A1100/W1010 | 65 |
| DH45VSD-10A/W | 2.4-6.0 | 10 | 45 | 1 1/2" | 2000 x 1300 x 1650 | 1590 x 950 x 1500 | A1100/W1010 | 65 |
| DH55VSD-7A/W | 4.0-10.0 | 7 | 55 | 2" | 2450 x 1550 x 1850 | 2300 x 1250 x 1600 | A1500/W1300 | 67 |
| DH55VSD-8A/W | 3.6-9.0 | 8 | 55 | 2" | 2450 x 1550 x 1850 | 2300 x 1250 x 1600 | A1500/W1300 | 67 |
| DH55VSD-10A/W | 3.1-7.8 | 10 | 55 | 2" | 2450 x 1550 x 1850 | 2300 x 1250 x 1600 | A1500/W1300 | 67 |
| DH75VSD-7A/W | 5.2-13.0 | 7 | 75 | 2" | 2700 x 1650 x 2020 | 2300 x 1250 x 1600 | A2000/W1550 | 71 |
| DH75VSD-8A/W | 4.8-12.0 | 8 | 75 | 2" | 2700 x 1650 x 2020 | 2300 x 1250 x 1600 | A2000/W1550 | 71 |
| DH75VSD-10A/W | 4.0-10.0 | 10 | 75 | 2" | 2700 x 1650 x 2020 | 2300 x 1250 x 1600 | A2000/W1550 | 71 |
| DH90VSD-7A/W | 6.7-16.8 | 7 | 90 | 2 1/2" | 3100 x 1600 x 2000 | 2450 x 1450 x 1700 | A2600/W2250 | 72 |
| DH90VSD-8A/W | 6.0-15.0 | 8 | 90 | 2 1/2" | 3100 x 1600 x 2000 | 2450 x 1450 x 1700 | A2600/W2250 | 72 |
| DH90VSD-10A/W | 5.6-14.0 | 10 | 90 | 2 1/2" | 3100 x 1600 x 2000 | 2450 x 1450 x 1700 | A2600/W2250 | 72 |
| DH110VSD-7A/W | 8.0-20.0 | 7 | 110 | 3" | 3500 x 1650 x 2100 | 2450 x 1450 x 1700 | A2800/W2450 | 74 |
| DH110VSD-8A/W | 7.4-18.5 | 8 | 110 | 3" | 3500 x 1650 x 2100 | 2450 x 1450 x 1700 | A2800/W2450 | 74 |
| DH110VSD-10A/W | 6.4-16.0 | 10 | 110 | 3" | 3500 x 1650 x 2100 | 2450 x 1450 x 1700 | A2800/W2450 | 74 |
| DH132VSD-7A/W | 10.0-25.0 | 7 | 132 | 3" | 4000 x 1700 x 2350 | 2450 x 1450 x 1700 | A4500/W2450 | 77 |
| DH132VSD-8A/W | 9.2-23.0 | 8 | 132 | 3" | 4000 x 1700 x 2350 | 2450 x 1450 x 1700 | A4500/W2450 | 77 |
| DH132VSD-10A/W | 8.0-20.0 | 10 | 132 | 3" | 4000 x 1700 x 2350 | 2450 x 1450 x 1700 | A4500/W2450 | 77 |
| DH160VSD-7A/W | 10.8-27.0 | 7 | 160 | 3" | 4000 x 1700 x 2350 | 2800 x 1500 x 1900 | A4500/W2600 | 78 |
| DH160VSD-8A/W | 10.2-25.5 | 8 | 160 | 3" | 4000 x 1700 x 2350 | 2800 x 1500 x 1900 | A4500/W2600 | 78 |
| DH160VSD-10A/W | 9.6-24.0 | 10 | 160 | 3" | 4000 x 1700 x 2350 | 2800 x 1500 x 1900 | A4500/W2600 | 78 |
| DH185VSD-7W | 11.5-32.8 | 7 | 185 | 3" | - | 2800 x 1500 x 1900 | 3000 | 78 |
| DH185VSD-8W | 10.5-30.0 | 8 | 185 | 3" | - | 2800 x 1500 x 1900 | 3000 | 78 |
| DH185VSD-10W | 9.8-28.0 | 10 | 185 | 3" | - | 2800 x 1500 x 1900 | 3000 | 78 |
| DH200VSD-7W | 11.9-34.0 | 7 | 200 | 3" | - | 3600 x 1700 x 2030 | 3500 | 78 |
| DH200VSD-8W | 11.2-32.0 | 8 | 200 | 3" | - | 3600 x 1700 x 2030 | 3500 | 78 |
| DH200VSD-10W | 10.2-29.0 | 10 | 200 | 3" | - | 3600 x 1700 x 2030 | 3500 | 78 |
| DH220VSD-7W | 13.7-39.0 | 7 | 220 | 4" | - | 3600 x 1700 x 2030 | 4000 | 78 |
| DH220VSD-8W | 13.3-37.0 | 8 | 220 | 4" | - | 3600 x 1700 x 2030 | 4000 | 78 |
| DH220VSD-10W | 12.3-35.0 | 10 | 220 | 4" | - | 3600 x 1700 x 2030 | 4000 | 78 |
| DH250VSD-7W | 14.5-41.5 | 7 | 250 | 4" | - | 3600 x 1700 x 2030 | 4500 | 79 |
| DH250VSD-8W | 14.2-40.5 | 8 | 250 | 4" | - | 3600 x 1700 x 2030 | 4500 | 79 |
| DH250VSD-10W | 13.3-38.0 | 10 | 250 | 4" | - | 3600 x 1700 x 2030 | 4500 | 79 |
| DH280VSD-7W | 17.5-50.0 | 7 | 280 | 4" | - | 4000 x 1800 x 2100 | 4700 | 79 |
| DH280VSD-8W | 16.5-47.0 | 8 | 280 | 4" | - | 4000 x 1800 x 2100 | 4700 | 79 |
| DH280VSD-10W | 15.8-45.0 | 10 | 280 | 4" | - | 4000 x 1800 x 2100 | 4700 | 79 |
| DH315VSD-7W | 19.6-56.0 | 7 | 315 | 5" | - | 4000 x 1800 x 2100 | 5200 | 80 |
| DH315VSD-8W | 18.2-52.0 | 8 | 315 | 5" | - | 4000 x 1800 x 2100 | 5200 | 80 |
| DH315VSD-10W | 16.8-48.0 | 10 | 315 | 5" | - | 4000 x 1800 x 2100 | 5200 | 80 |

37-250kW low-pressure product performance parameters (pressure: 3/4 bar)

| Model | Displacement m3/min | Pressure barg | Power kW | Port size inch | Noise dB(A) | External dimensions (L x W x H)mm | Weight kg | Cooling water volume 30℃ (t/h) |
|---------------|------------------------|------------------|-------------|-------------------|----------------|--------------------------------------|--------------|-----------------------------------|
| DH37VSD-3A/W | 3.1-10.0 | 3 | 37 | 2 1/2" | 65 | 2450x1550x1850(A/W) | 1200 | 8 |
| DH37VSD-4A/W | 2.5-8.5 | 4 | | | | | | |
| DH45VSD-3A/W | 4.2-13.5 | 3 | 45 | 3" | 70 | 2450x1550x1850(A/W) | 1500 | 9 |
| DH45VSD-4A/W | 3.1-10.0 | 4 | | | | | | |
| DH65VSD-3A/W | 5.3-17.5 | 3 | 65 | 4" | 71 | 2700x1650x2020(A) | 2200 | 10 |
| DH65VSD-4A/W | 4.1-13.5 | 4 | | | | 2700x1450x2000(W) | | |
| DH75VSD-3A/W | 7.1-23.0 | 3 | 75 | 4" | 75 | 2700x1650x2020(A) | 2450 | 15 |
| DH75VSD-4A/W | 6.4-20.0 | 4 | | | | 2700x1450x2000(W) | | |
| DH90VSD-3A/W | 8.7-27.0 | 3 | 90 | 5" | 77 | 3500x2000x2250(A) | 2600 | 17 |
| DH90VSD-4A/W | 7.5-24.0 | 4 | | | | 3600x1700x2030(W) | | |
| DH110VSD-3A/W | 10.5-33.8 | 3 | 110 | 5" | 78 | 3500x2000x2250(A) | 3000 | 20 |
| DH110VSD-4A/W | 8.7-28.0 | 4 | | | | 3600x1700x2030(W) | | |
| DH132VSD-3A/W | 14.0-45.0 | 3 | 132 | 6" | 78 | 4000x2000x2350(A) | 4500 | 25 |
| DH132VSD-4A/W | 10.8-35.0 | 4 | | | | 3600x1700x2030(W) | | |
| DH160VSD-3W | 16.2-52.0 | 3 | 160 | 6" | 79 | 3600x1700x2030 | 5000 | 28 |
| DH160VSD-4W | 13.4-43.0 | 4 | | | | | | |
| DH185VSD-3W | 18.0-58.0 | 3 | 185 | 6" | 79 | 3800x1700x2300 | 5100 | 35 |
| DH185VSD-4W | 18.0-45.0 | 4 | | | | 3600x1700x2030 | | |
| DH200VSD-3W | 19.0-60.0 | 3 | 200 | 8" | 79 | 3800x1700x2300 | 5200 | 37 |
| DH200VSD-4W | 19.0-48.0 | 4 | 200 | 6" | 79 | 3600x1700x2030 | 5200 | 37 |
| DH220VSD-4W | 19.0-60.0 | 4 | 220 | 6" | 79 | 3800x1700x2300 | 5300 | 39 |
| DH250VSD-3W | 35.0-70.0 | 3 | 250 | 8" | 80 | 4100x2050x2350 | 5500 | 45 |

More efficient and energy-saving two-stage compression technology

In the two-stage compression process, the compression ratio of each stage is low, which correspondingly reduces the bearing load and extends the component life.

By using two-stage compression, the compression ratio of each stage is reduced to minimize internal leakage

By cooling between stages, the second stage compression is made closer to isothermal compression, achieving energy savings

Performance parameters of two-stage compression products (pressure: 8/10 bar)

| Model | Displacement m3/min | Pressure barg | Power kW | Port size inch | Noise dB(A) | External dimensions | Weight kg | Cooling water |
|-------------------|------------------------|------------------|-------------|-------------------|----------------|---------------------|------------------------|---------------|
| DH90VSD-2S-8A/W | 7.0-20 | 8 | 55+37 | 2 1/2" | 3500x1650x2100 | 3000x1600x2100 | 3500 w ind/3700 w ater | 15 |
| DH110VSD-2S-10A/W | 7.0-20 | 10 | 75+45 | 2 1/2" | 4000x2000x2350 | 3000x1600x2100 | 3500 w ind/3370 w ater | 22 |
| DH120VSD-2S-8A/W | 8.4-24 | 8 | 75+45 | 2 1/2" | 4000x2000x2350 | 3000x1600x2100 | 3550 w ind/3450 w ater | 22 |
| DH140VSD-2S-10A/W | 8.4-24 | 10 | 75+65 | 2 1/2" | 4000x2000x2350 | 3000x1600x2100 | 3600 w ind/3450 w ater | 25 |
| DH165VSD-2S-8W | 10.5-30 | 8 | 90+75 | 3" | - | 3000x1600x2100 | 3500 | 32 |
| DH180VSD-2S-10W | 10.5-30 | 10 | 90+90 | 3" | - | 3000x1600x2100 | 3500 | 35 |
| DH185VSD-2S-8W | 12.6-36 | 8 | 110+75 | 4" | - | 3600x2000x2100 | 4500 | 35 |
| DH200VSD-2S-10W | 12.6-36 | 10 | 110+90 | 4" | - | 3600x2000x2100 | 4500 | 38 |
| DH200VSD-2S-8W | 14-40 | 8 | 110+90 | 4" | - | 3600x2000x2100 | 4500 | 38 |
| DH220VSD-2S-10W | 14-40 | 10 | 132+90 | 4" | - | 3600x2000x2100 | 4500 | 42 |
| DH240VSD-2S-8W | 15.75-45 | 8 | 132+110 | 4" | - | 3600x2000x2100 | 4700 | 45 |
| DH270VSD-2S-10W | 15.75-45 | 10 | 160+110 | 4" | - | 3600x2000x2100 | 4700 | 50 |
| DH270VSD-2S-8W | 17.5-50 | 8 | 160+110 | 6" | - | 3800x2000x2100 | 5000 | 50 |
| DH290VSD-2S-10W | 17.5-50 | 10 | 160+132 | 5" | - | 3800x2000x2100 | 5000 | 52 |
| DH30VSD-2S-8W | 21-60 | 8 | 220+110 | 5" | - | 3800x2000x2100 | 5800 | 56 |
| DH35VSD-2S-10W | 21-60 | 10 | 220+132 | 5" | - | 3800x2000x2100 | 5800 | 58 |

55-410kW medium voltage product performance parameters (pressure: 20/30/40/60bar)

| Model | Displacement m3/min | Pressure barg | Power kW | Port size inch | Noise dB(A) | External dimensions (L x W x H)mm | Weight kg | Cooling water volume 30℃ (t/h) |
|---------------|------------------------|------------------|-------------|-------------------|----------------|--------------------------------------|--------------|-----------------------------------|
| DH65VSD-20A/W | 1.8-6.0 | 20 | 37+15 | 1" | 70 | 3000x1400x1700(A) | 2000 | 12 |
| DH60VSD-30A/W | 1.8-6.0 | 30 | 37+22 | 1" | 70 | 2900x1400x1700(W) | 2000 | 12 |
| DH75VSD-40A/W | 1.8-6.0 | 40 | 37+37 | 1" | 70 | | 2100 | 15 |
| DH75VSD-20W | 3.0-10.0 | 20 | 55+22 | 1 1/4" | 73 | 3500x1500x1730 | 2400 | 17 |
| DH90VSD-30W | 3.0-10.0 | 30 | 55+37 | 1 1/4" | 73 | 3500x1500x1730 | 2300 | 17 |
| DH120VSD-40W | 3.0-10.0 | 40 | 75+45 | 1 1/4" | 73 | 3500x1500x1730 | 2400 | 20 |
| DH110VSD-20W | 3.8-13.0 | 20 | 75+30 | 1 1/2" | 75 | 3500x1500x1730 | 2500 | 22 |
| DH120VSD-30W | 3.8-13.0 | 30 | 75+45 | 1 1/2" | 75 | 3500x1500x1730 | 2500 | 22 |
| DH145VSD-40W | 3.8-13.0 | 40 | 90+55 | 1 1/2" | 75 | 3500x1500x1730 | 2650 | 24 |
| DH130VSD-20W | 5.0-16.0 | 20 | 90+37 | 1 1/2" | 76 | 4000x1700x1800 | 3200 | 27 |
| DH145VSD-30W | 5.0-16.0 | 30 | 90+55 | 1 1/2" | 76 | 4000x1700x1800 | 3200 | 27 |
| DH185VSD-40W | 5.0-16.0 | 40 | 110+75 | 1 1/2" | 76 | 4000x1700x1800 | 3200 | 35 |
| DH165VSD-20W | 6.1-20.0 | 20 | 110+55 | 2" | 76 | 4000x1700x1800 | 3600 | 35 |
| DH185VSD-30W | 6.1-20.0 | 30 | 110+75 | 1 1/2" | 76 | 4000x1700x1800 | 3600 | 35 |
| DH220VSD-40W | 6.1-20.0 | 40 | 132+90 | 1 1/2" | 76 | 4000x1700x1800 | 3800 | 38 |
| DH200VSD-20W | 7.0-24.0 | 20 | 132+65 | 2" | 77 | 4000x1800x2100 | 4200 | 38 |
| DH220VSD-30W | 7.0-24.0 | 30 | 132+90 | 2" | 77 | 4000x1800x2100 | 4200 | 38 |
| DH270VSD-40W | 7.0-24.0 | 40 | 160+110 | 2" | 77 | 4000x1800x2100 | 4300 | 45 |
| DH235VSD-20W | 8.5-28.0 | 20 | 160+75 | 2 1/2" | 78 | 4200x2000x2100 | 4600 | 46 |
| DH270VSD-30W | 8.5-28.0 | 30 | 160+110 | 2" | 78 | 4200x2000x2100 | 4600 | 46 |
| DH310VSD-40W | 8.5-28.0 | 40 | 200+110 | 2" | 78 | 4200x2000x2100 | 4600 | 55 |
| DH290VSD-20W | 9.5-36.0 | 20 | 200+90 | 2 1/2" | 80 | 4500x2250x2200 | 5000 | 50 |
| DH330VSD-30W | 9.5-36.0 | 30 | 200+132 | 2 1/2" | 80 | 4500x2250x2200 | 5000 | 60 |
| DH380VSD-40W | 9.5-36.0 | 40 | 220+160 | 2 1/2" | 80 | 4500x2250x2200 | 5000 | 68 |
| DH330VSD-20W | 10.0-40.0 | 20 | 220+110 | 2 1/2" | 80 | 4500x2250x2200 | 5000 | 65 |
| DH380VSD-30W | 10.0-40.0 | 30 | 220+160 | 2 1/2" | 80 | 4500x2250x2200 | 5000 | 70 |
| DH410VSD-40W | 10.0-40.0 | 40 | 250+160 | 2 1/2" | 80 | 4500x2250x2200 | 5000 | 85 |
| DH295VSD-60W | 10.0-20.0 | 60 | 185+110 | DN40 | 80 | 4200x2100x2000 | 5000 | 58 |

Packing and Shipping:

Product Packaging:

The Oil free lubrication permanent magnet variable frequency screw air compressor comes in a sturdy cardboard box with the product image and specifications printed on the outside. Inside, the product is securely packaged with foam inserts to prevent any damage during transportation.

Shipping:

Our standard shipping time is 3-5 business days. For expedited shipping, please contact our customer service team. We ship via trusted carriers such as UPS, FedEx, and USPS and provide a tracking number for your convenience.

FAQ:

Q: What is the brand name of this product?

A: The brand name of this product is Aipu.

Q: What is the model number of this product?

A: The model number of this product is Oil free lubrication permanent magnet variable frequency screw air compressor.

Q: Where is this product made?

A: This product is made in China.

Q: Does this product have any certifications?

A: Yes, this product is certified by ce.ul.

Q: What is the minimum order quantity for this product?

A: The minimum order quantity for this product is 1pc.

Q: Is the price of this product negotiable?

A: Yes, the price of this product is negotiable.

Q: What is the packaging details for this product?

A: The packaging details for this product is container.

Q: How long is the delivery time for this product?

A: The delivery time for this product is 10 days.

Q: What are the payment terms for this product?

A: The payment terms for this product is tt.

Q: What is the supply ability of this product?

A: The supply ability of this product is 100t/y



Yixing Aipu Air System Equipment Co., Ltd



13771572002



183426306@qq.com



aipukqdl.com

Yixing Yicheng Street Hardware Electromechanical City, Phase I, Block 5, District 3, 8071